



Profile® is an intelligent data manager with the best analytical tools in the industry. It incorporates monitoring data from ADS monitors and other flow meters for analysis and reporting.

Profile

Profile is serious software for serious users yet it is easy to use and can operate for a single monitor, or monitor networks of any size without limitations. From basic flow data to more complex hydraulic analysis, Profile is intuitive software that saves time and improves data quality by compiling project data into one location for analysis and reporting.

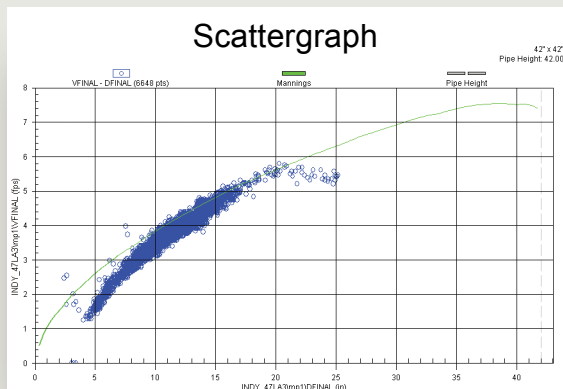
ADS Monitors

Profile configures, collects, edits, and reports flow data from ADS monitors. It manages and schedules data collects and generates reports. It consolidates monitor configuration, activation, data management, and flow analysis software into a powerful desktop package. Communications can be handled both remotely and on-site. Tasks can be scheduled during non-business hours and idle time to improve data collecting and reporting efficiency.

Other Meters

Profile will import data in CSV, Excel, and text formats from most other meters, thereby allowing data from multiple vendors to be incorporated into a single package for analysis and reporting. This functionality enables the user to calculate quantities, utilize hydrographs and scattergraphs for trend analysis and sewer flow evaluations, and schedule reports for all locations. The powerful set of features incorporated into Profile help users save time by automating processes and consolidating data.

Serious Software for Serious Users



Hydraulic events can be evaluated through pattern analysis of scattergraphs

About ADS

ADS Environmental Services®, a division of ADS® LLC, is a leading technology and service provider and a reliable source of knowledge to the global wastewater collection system industry. Monitors manufactured, installed, and maintained by ADS measure over 4 billion gallons of flow daily across the globe. ADS delivers value to its customers by providing industry-leading solutions for flow monitoring, data analysis, reporting and field services. These customers rely on Underground Intelligence® from ADS to manage planning and rehabilitation, satellite community billing, regulatory compliance, O&M, and model calibration.



FEATURES

Quantity Calculations

Profile accommodates all pipe shapes and sizes with varying roughness and silt levels. It also generates flow quantities, which can be expressed in user-selectable units of measure.

Data Analysis

User has graphical control over common operations to speed data analysis (i.e. zoom, copy and undo) and the ability to define a group of locations for use in other functions such as data collection and graphing. Profile offers graphical data editing of scattergraphs and hydrographs and allows user to display and modify each data point for each recorded parameter in the system to ensure data anomalies are removed. Users may also define units of measure for each entity type they are analyzing.

User Interface

The easy-to-use interface provides graphic customization that includes fonts, colors, scales, and other information for high quality reports. Data from most area velocity meters can be imported in CSV, Excel, and text formats and rapidly modified with graphical data editing tools. Reports generated include field gathered confirmation data, Data Uptime, and Balance Reports. Tabular data displays numerical flow data from multiple monitors to review and edit with exporting capabilities to Excel or hydraulic models.

Hydrographs and Scattergraphs

Powerful trend analysis can be conducted with hydrographs to evaluate sewer flow over time. Views can be generated in custom or preset intervals. Data from multiple monitors can be displayed simultaneously and multiple entities can be plotted with different scales. Through scattergraph analysis, data and hydraulic anomalies can be easily detected and resolved.

Communication

On-demand and scheduled data collection is supported for ADS flow monitors and rain gauges. Profile can communicate with ADS flow monitors via local serial cable connection, or remotely via wireless or wireline telemetry. A special "Auto Collect" feature automates retrieval of only the most recent data, saving time and monitor battery life. Users have complete control of local and remote data collection dates and times.

Field Diagnostics

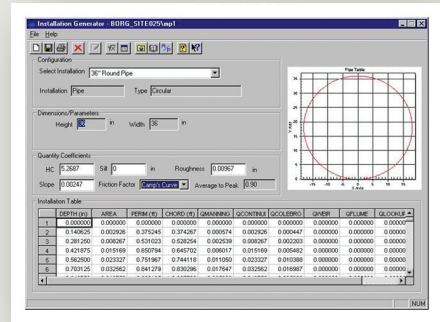
Users can communicate with ADS flow monitors in real-time mode to confirm sensor accuracy, diagnose the operation of electronics, and monitor battery voltages. Remote troubleshooting, and sensor confirmations can be performed to significantly reduce on-site maintenance.

Minimum System Requirements

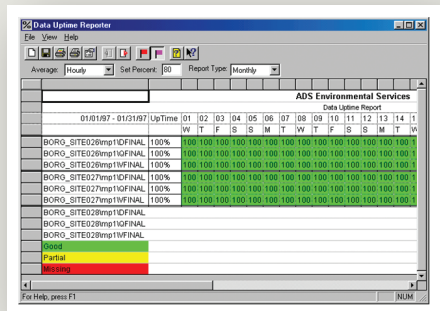
- Laptop or desktop PC with a Pentium IV processor
- 1GB RAM
- Microsoft Windows XP or Vista

Special Features

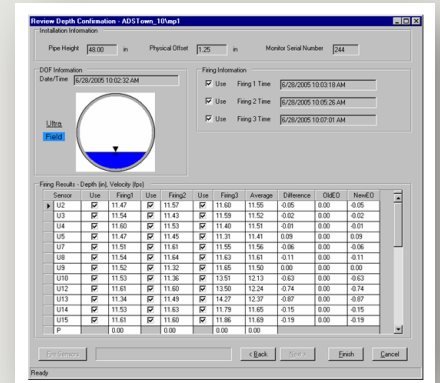
- **Balance Report** - Provides a graphic display of time and quantity values on screen showing upstream to downstream flows on one graph.
- **Communication Log** - Displays current status and results of communications between remote monitor and host computer. Historical communication logs stored for review.
- **Site DR** - Streamlines troubleshooting efforts with diagnostics analysis and reviews. Automatically reviews collection data against user definable quality criteria.



Installation Generator



Data Uptime Reporter



Diagnostics
Depth Confirmation Screen

ADS ENVIRONMENTAL SERVICES
A Division of ADS LLC

ADS. An IDEX Water & Wastewater Business. **IDEX**

1300 Meridian Street, Suite 3000, Huntsville, AL 35801
Phone: 256-430-3366 / Fax: 256-430-6333
Toll Free: 1-800-633-7246