

Primayer PrimeWorks®

Water network data management software



PrimeWorks is for use with Primayer's extensive range of data logging devices; PrimeLog, PrimeProbe and XiLog. These devices are used for hydraulic data collection, from all parts of the water cycle.

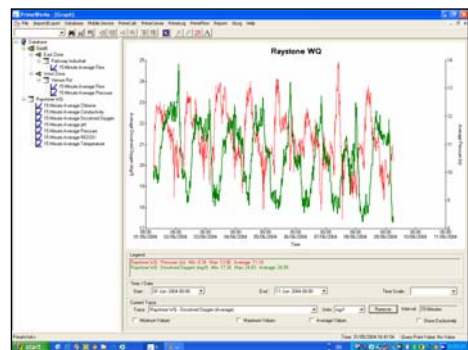
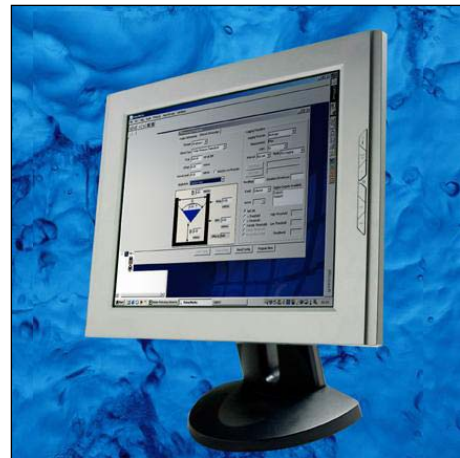
PrimeWorks operates on both PC and PDA platforms. The software is simple to use with modular construction and operations executed from single screens. It makes extensive use of Windows® facilities and includes features to maximise user efficiency.

Applications:

- Pipeline flow
- Pipeline pressure
- Reservoir depth/volume
- Borehole depth
- Rainfall (with PrimeLog only)
- Open channel flow
- Overflows (with PrimeLog only)
- Pump monitoring (with PrimeLog only)

Facilities:

- Extensive database control
- Data import/export
- Graphing and reporting
- Data handling such as addition/subtraction of pipeline flows
- Conversions such as reservoir depth to volume data



Communications modules

Separate modules enable communications with each of the **PrimeLog**, **PrimeProbe** and **XiLog** logging products. Connection may be either locally or remote (in the case of **XiLog**). **PrimeWorks** is optimised for swift programming/readback for large numbers of loggers to aid survey operations. Alarm reporting is incorporated where appropriate.

Database browse control

The core of **PrimeWorks** data handling is via the browse control. The database can be organised by *sites* (for permanent location of loggers) or by *data loggers* (for surveys). Each site or data logger is pictorially represented showing its relationship. This allows the user to define and manage data effectively. Browse features include:

- Merge databases
- Transfer files from PDA to PC
- Rename, copy and delete
- Site/Logger relationship

Report module

The Report module includes the facility to produce logged data reports, daily statistics reports and alarm/event reports. Data from the earlier PrimeWare software can be imported into the **PrimeWorks** database.

Graph module

This module provides clear, simple to use graphing features:

- Line graphs up to 24 data plots
- Full axis zoom, pan and scaling
- Statistical information
- Data interval alteration
- Engineering unit selection
- Text annotation of plots

PrimeCalc module

The PrimeCalc module allows post-processing of data from the database. Example include:

- Addition/subtraction of flow data for viewing zonal/district flows or consumption
- Re-scaling of data sets
- Creation of new files relating to 'virtual sites'
- Conversion of reservoir depth into volume

Import/Export module

Data may be exported to a number of packages, including spreadsheets and databases. Data is exported in the common .csv format. Interfaces can be produced to enable data export to other software, including customer's bespoke packages.

Minimum system requirements

PrimeWorks is suitable for operation on PC's operating Microsoft Windows® 98 (or later).

It operates on PDA's having a minimum specification of 64Mb SD RAM, SD slot with SD card and serial I/O card. The PDA should operate Windows® Pocket PC version 2002 (or later).

